

COMPLETE SYSTEMS

Most temperature calibrations require more than one test instrument. At a minimum, a heat source, a reference thermometer, and a thermometer readout are usually required. Often the system becomes even more complex with multiple heat sources, separate thermometer readouts for the reference thermometer and probes under test, and multiple types of reference and test thermometers (such as PRTs and thermocouples) being used at once.

The only glue that can hold such a system together is software—software that communicates with thermometer

readouts and controls multiple heat sources. On the pages that follow, you'll read about our Calibrate-*it* software and other software products that can dramatically increase the productivity of your calibrations.

Only one company in the world manufactures every single component of an automated calibration system. It's a fact, and the proof is on every page of this catalog. Hart manufactures SPRTs and other reference thermometers; thermometer readouts that read PRTs, thermistors, and thermocouples in virtually any combination or quantity; metrology fluid

baths that cover temperatures from -80°C to 550°C (including micro-baths); and dry-well calibrators in field, lab, and high-temp furnace varieties.

Likewise only one company produces the software that utilizes each of these components to its fullest potential and automates your lab. Because Hart makes all these instruments, there's virtually no end to the list of combinations of products we can assemble to meet your specific needs. Tell us your requirements and let us design a system that does exactly what you need it to do—in the most cost-effective, productive fashion.

1. Tell us your requirements for:

- Sensor types
- Temperature range
- Uncertainty levels

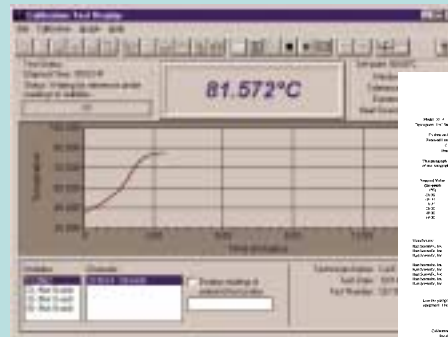
3. We'll recommend a reference thermometer and readout



2. We'll help you select your heat sources



4. Install Calibrate-*it* and run totally automated calibrations



Report of Calibration

Instrument	Model	Serial	Calibrated	Uncertainty
SPRT	1000	12345	2000-01-01	0.001
SPRT	1000	12346	2000-01-01	0.001
SPRT	1000	12347	2000-01-01	0.001
SPRT	1000	12348	2000-01-01	0.001
SPRT	1000	12349	2000-01-01	0.001
SPRT	1000	12350	2000-01-01	0.001
SPRT	1000	12351	2000-01-01	0.001
SPRT	1000	12352	2000-01-01	0.001
SPRT	1000	12353	2000-01-01	0.001
SPRT	1000	12354	2000-01-01	0.001
SPRT	1000	12355	2000-01-01	0.001
SPRT	1000	12356	2000-01-01	0.001
SPRT	1000	12357	2000-01-01	0.001
SPRT	1000	12358	2000-01-01	0.001
SPRT	1000	12359	2000-01-01	0.001
SPRT	1000	12360	2000-01-01	0.001

Software