

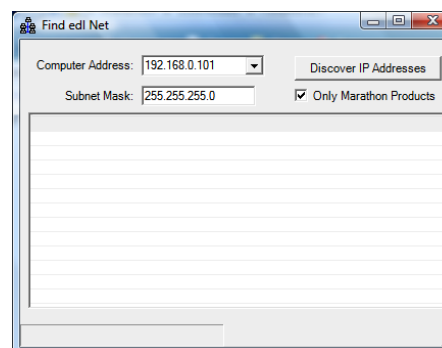
EDL Net

Plug the EDL-Net into your LAN.

The network DHCP server assigns an address to the new device on the LAN.

To find out the assigned address, put the Marathon software CD in your PC and run **Find EDL Net** program.

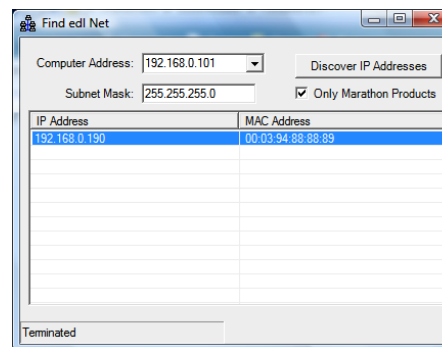
Make sure the box is checked for **Only Marathon Products**



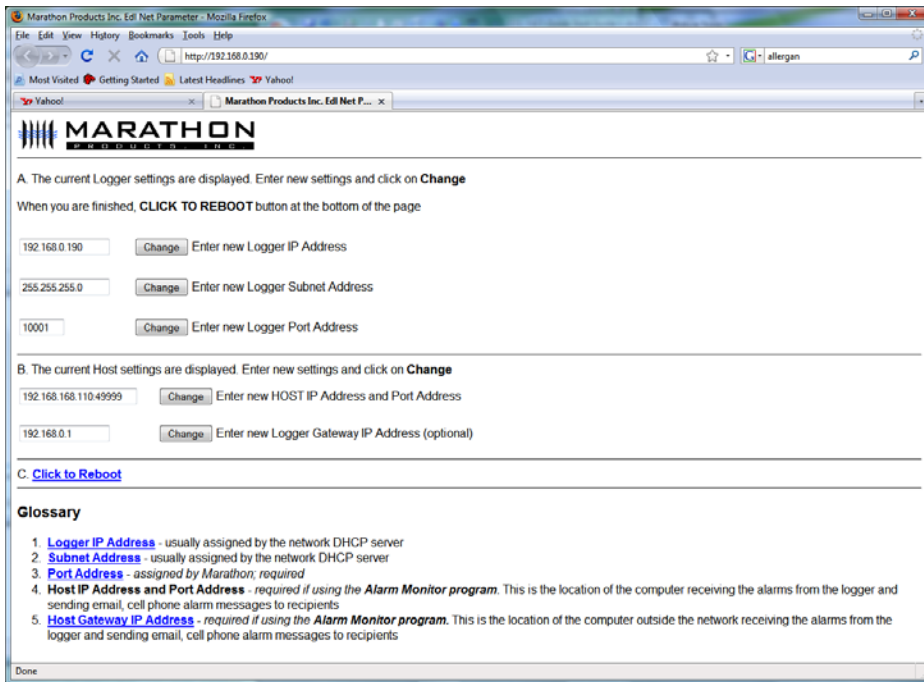
- Click on **Discover IP Addresses**

The program will find and list all Marathon Products devices on the same subnet.

For future reference make a note of the address for the EDL-Net logger.



- Click on the logger entry which will open a web browser with the address and host information filled in.



If you want to you can change the address to a new address that will not be changed by the DHCP server. This should be done with the help of your IT department. If you change the address, or other information in A, click on **Change** and click on C. Click on **Click to Reboot** to reboot the logger.

Before leaving this form make a note of the **“Logger Port Address”** this will be used later.

For the Alarm Monitor to work the logger needs to know where to send the alarm message. The Alarm Monitor software should be run on a computer that is on 24 hours a day. The IP address of that computer running the Alarm Monitor software is entered as the “Host IP Address” on the form. Note that on the form the entry is represented as Address:Port. The default port is 49999.

Also be aware that the computer running the Alarm Monitor program may have a firewall also running. This firewall will probably block messages coming in on port 49999. You will need to modify the firewall settings so that messages coming in on port 49999 go to the Alarm Monitor.

Close the browser window.

## MDAS-Pro Software Installation


MDAS-Pro software runs on Microsoft Windows XP and Vista operating systems.

- The CD-ROM will begin installation when inserted in the drive.

- Choose **SOFTWARE PROGRAM**, to begin the installation process of the software.
- If for some reason, the CD program does not start, please go to **START, RUN, BROWSE** (go to your cd-rom drive), and **SETUP**, to begin the installation process.
- A screen will appear with the message **Initializing Setup**. You will be asked where to install the program. The default is **c:\programs\MDAS-PRO**. If you wish to install the MDAS-PRO program on a different drive or in a different directory, type the drive and directory name.
- The installation program will now transfer files to your destination drive and directory.
- Following the installation of the program files, a Marathon program directory and two icons will be created: **MDAS-PRO Software** and the **Alarm Monitor**.

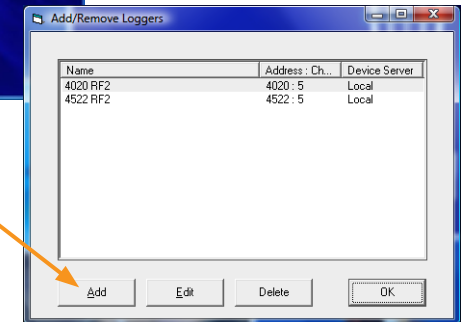
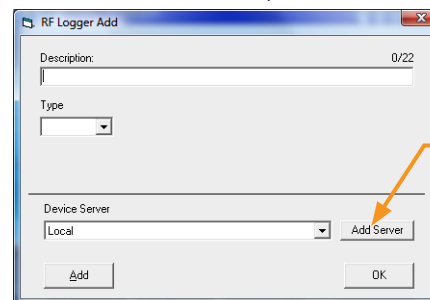
## Add Loggers



To start the software double-click on the software icon  or, go to **Start, Programs, MDAS-PRO**.

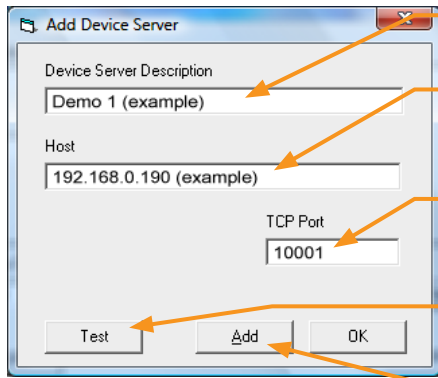
Click on the **EDL-Net** menu item and select **Admin, Add/Remove Logger**.

- Click on **Add** to create a new Logger definition. The “RF Logger Add” window will open.



At this stage, leave settings as is and click on **Add Server**. (We will return to this window later.) the “Add Device Server” window will open.

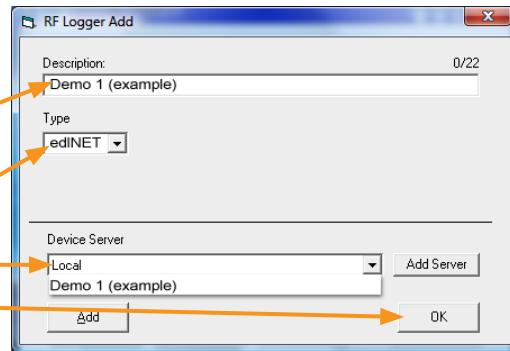
FILL IN:



- Type a description of the EDL-Net logger (see example: "Demo 1"),
- Under Host, put the address of the EDL-Net you wrote down earlier (example: "192.168.0.190"),
- The TCP Port is the "Logger Port Address" you wrote down earlier (example: "10001").
- Click **Test** to test the connection for the server.
- Then click on **Add**. You will return to the "RF Logger Add" window.

ENTER:

- A description of the EDL-Net logger (you can use the same description as the server),
- Select EDLNet from the drop down list,
- Select the server you just entered in the previous step.
- Then click **OK**.



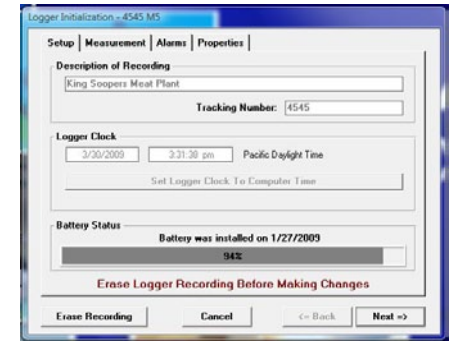
## Logger Initialization: To configure the logger



- In the MDAS-Pro menu bar click on **EDL-Net**.
  - In the drop-down menu click on the **Logger** you just entered.
  - Click on **Logger Initialization**.
- The Logger Initialization screen allows you to set up your parameters for the EDL-Net logger by using the four tabs: **Setup, Measurement, Alarms, and Properties**.

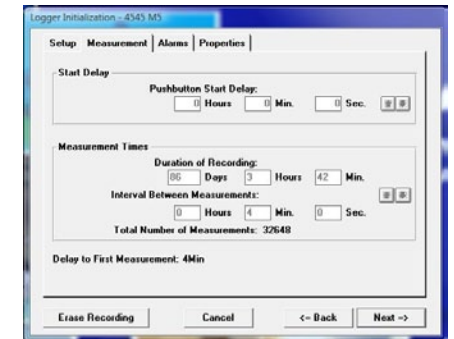
## SETUP TAB

- **Description:** Enter alpha or numeric information, such as the location of the unit.
- **Tracking Number:** Enter any numeric information. We recommend using the same number as the logger address.
- **Logger Clock:** Set the time manually in the window provided or to set the logger-time based on the computer time as registered on your personal computer.
- **Battery Status:** The EDL-Net logger comes with two sets of batteries: one set powers the RF module and the other one powers the logger. The percentage bar in this section displays the estimated battery life based on the date when the logger battery was first installed or replaced.



## MEASUREMENT TAB

- **Start Delay:** Set a time delay in hours, minutes, or seconds before the EDL-Net will begin to record.
  - **Measurement Times:** Set the length of time in days or hours that you wish to record data. Please note that the "Duration of Recording" and "Interval Between Measurements" are dynamically linked. Setting the "Duration of Recording" will automatically calculate the "Interval Between Measurements". Conversely, setting the "Interval Between Measurements", will automatically calculate the "Duration of Recording".
- For example**, for a 32K model, if you set the "Duration of Recording" to 365 Days, it will automatically calculate the "Interval Between Measurements" as 16 minutes and 58 seconds. Or, if you set the "Interval Between Measurements" at 10 minutes, it will automatically calculate the "Duration of Recording" to 215 days and 9 hours.



## ALARMS

- **Temperature Greater Than:** Allows you to set the maximum temperature for an alarm condition to be triggered.
- **Temperature Less Than:** Allows you to set the minimum temperature for an alarm condition to be triggered.
- **Alarm Time:** Alarm conditions are checked when measurements are made. If measurements are made every 5 minutes, then the valid intervals for the Alarm conditions are 0, 5, 10, 15, ... etc. A zero time is interpreted as a single measurement. In this example, five minutes would require two measurements outside the alarm limits to cause an alarm condition.



The loggers support two different methods of measuring the time for an alarm condition. The default method is “Cumulative Time”. The total time beyond the limit is counted. The alarm limits may be exceeded only once or several times as the total time is added together. The second method is called “Continuous Interval”. The alarm will activate only when the alarm limit has exceed the full time specified. If the temperature returns to the acceptable range the time count will be reset.

## ADVANCED ALARM MODES (NOTIFICATION):

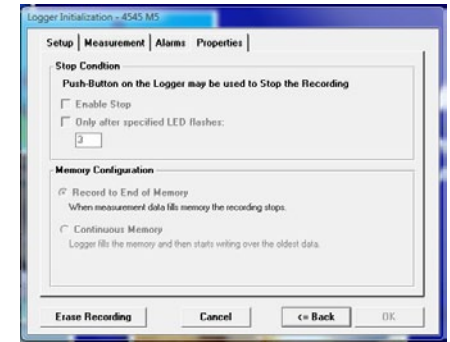
- **Single Alarm Notification:** with “Single Alarm Notification” the logger must be reinitialized to reset the alarm. This option allows you to set alarm time.
- **Manual Reset:** With “manual reset” you can reset the alarm by pressing the Start button. This option allows you to set alarm time.
- **Temperature Notification:** With “Temperature Notification” the EDL-Net will send an email every time the temperature reaches the alarm limit, in other words, it resets itself. You cannot set an alarm time with this option. You can control the frequency of the emails from Admin/ Alarm Setting/ Time between email notifications.

## PROPERTIES

- **Stop Condition:** The Push Start button on the EDL-Net logger may be enabled as a “Stop” button mechanism. This option is not recommended if you are using the manual alarm reset notification.
- **Memory Configuration:** The default is Record to End of Memory.

**Note:** The recording can also be stopped by using the remote stop from the software.

- When you are finished entering your settings click **OK**.



## You are now ready to begin recording.

- Simply manually press the Start button or click on remote start from the software, EDLNet\_(logger description)\_Start\_Recording\_Now.
- The green LED indicator light will blink three times in succession.

