

MARATHON PRODUCTS, INC.

Ethernet Base Station Installation Lantronix

Firmware: Ver. 6.1.0.0

Software: Device Server Configuration Manager 1.3.0.0



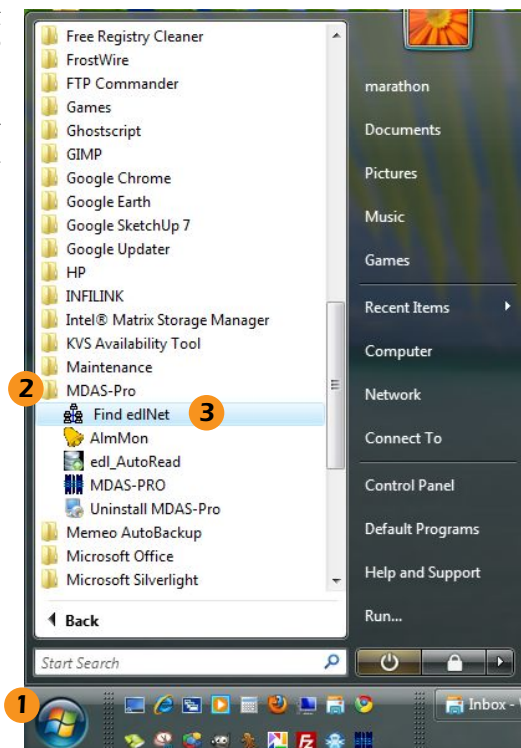
1. INSTALLATION

1.1 FINDING THE IP ADDRESS FOR MARATHON DEVICES

The IP address for the unit will be assigned by DHCP in your network.

To find the address for your Ethernet Base Station connect the base station to your network.

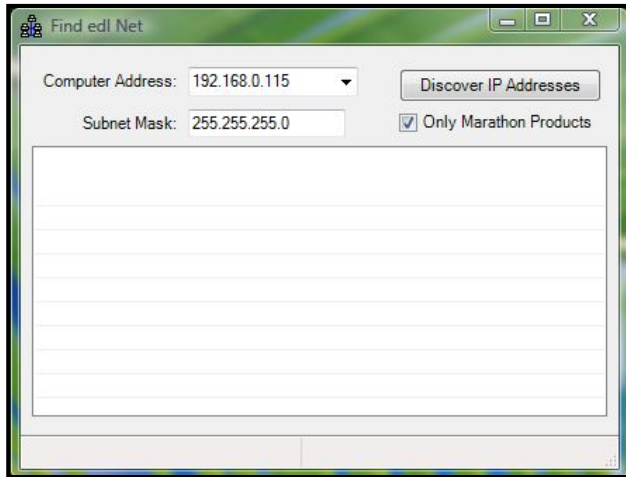
1. Click on the **Start** button in the task bar.
2. Find **MDAS-Pro** Folder and expand it.
3. Click on **Find edlNet**.



SCREENSHOT 1 – MDAS-Pro Folder

- The **Find edlNet** window will open. Click on **Discover IP Addresses** (see screenshot 2).

This will search your network for Marathon Products devices and return a list of their IP addresses. Make a note of these addresses. You will enter the IP address for each base station and/or edl-Net logger you are installing.

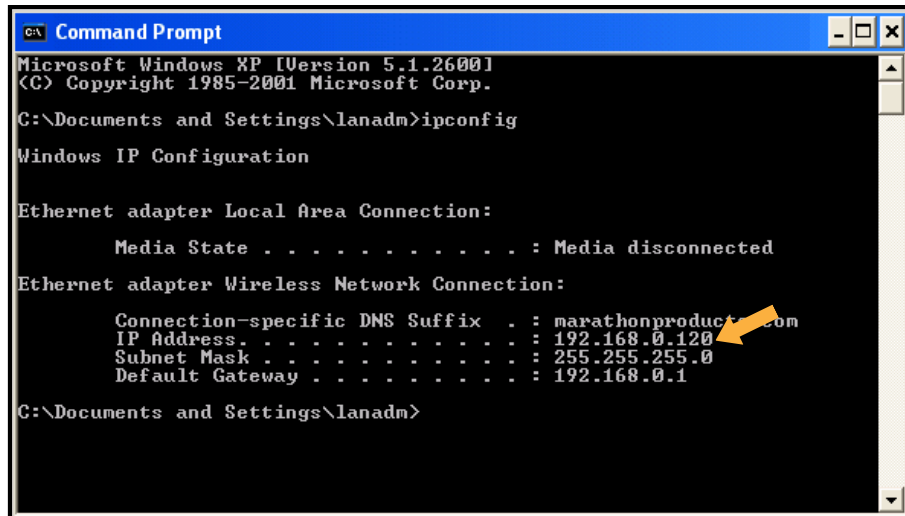


SCREENSHOT 2 – Find edl Net

Now proceed to the Quick Start Guide for your particular product to install your base stations and loggers.

1.2 SETTING ETHERNET BASE STATION TO REPORT ALARMS

Once you have decided which computer is going to be running the MDAS software and Alarm Monitor application, you will need to find the IP address of that computer.

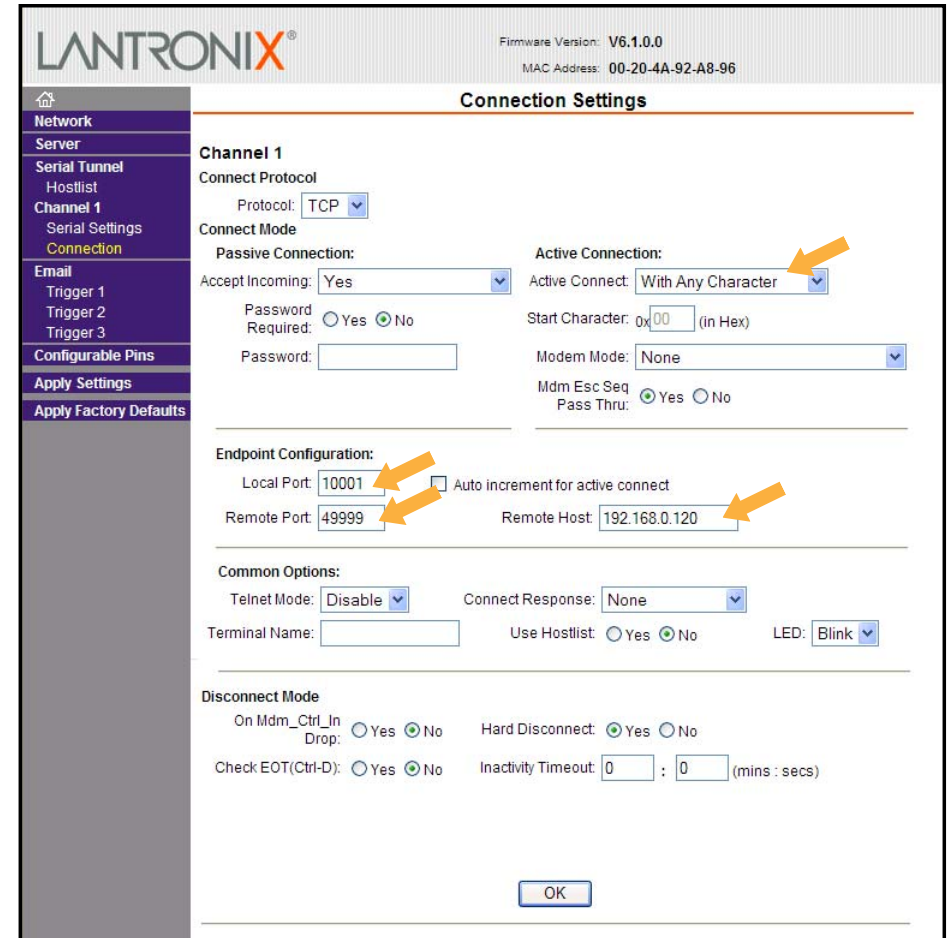


SCREENSHOT 3 – Command Prompt

- From the Windows Start button go to your Programs, Command Prompt and enter ipconfig (see screenshot 3).

- Write the IP Address reported by Command Prompt

- Open your internet browser and open <http://your Ethernet Base Station IP Address> to confirm the access to the Ethernet device.
- You will be asked for a login and password. Just ignore by clicking OK.
- Click on Connection Setting (see screenshot 4).



SCREENSHOT 4 – Connection Settings

6. Set the following parameters:

Active Connections

Active Connect: With Any Character

Endpoint Configuration

Local Port: 10001

Remote Port: 49999

Remote Host: Your Computer IP Address

7. Click OK and Apply Settings.

1.3 ETHERNET BASE STATION SETTINGS (LANTRONIX)

You may wish to click through the other screens to familiarize yourself with the available Ethernet base station settings for Lantronix. Except for the settings that we have specifically asked you to change in this guide, the default settings should remain unchanged.

2. TECHNICAL SUPPORT

Please call Marathon Products, Inc at 1-800-858-6872 for Technical Support. Troubleshooting information is available at http://www.marathonproducts.com/troubleshoot_1.html

Our Ethernet base station is a UDS200 Lantronix device. There are alternative methods to install the Ethernet base station and assign the IP address. In some instances we may need to escalate your case to Lantronix technical support team. Lantronix procedure may require the use of a crossover cable that we have supplied along with base station accessories.

Please call Lantronix Technical support at (800) 422-7044. For products category Press 1 and for product Press 1.



If your network does not have a DHCP server to automatically assign IP addresses please refer to the NON-DHCP Quick Start Guide.