

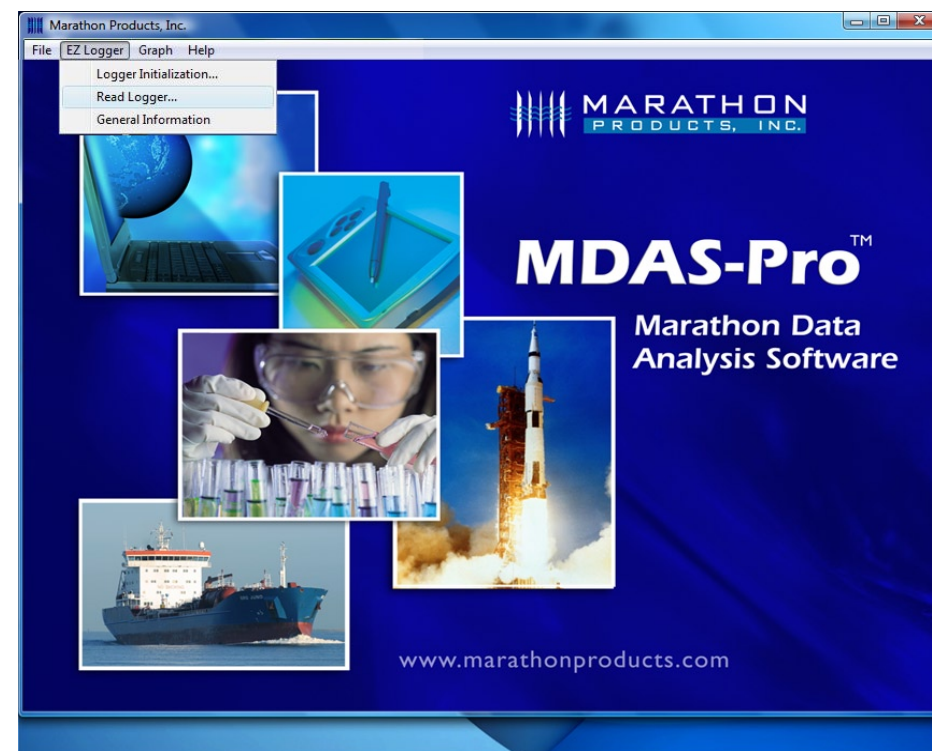
# MARATHON PRODUCTS, INC.

## EZ Logger Reading Instructions:

Start the **MDAS-Pro software** by double clicking on the icon.

Select **EZ Logger** on the menu.

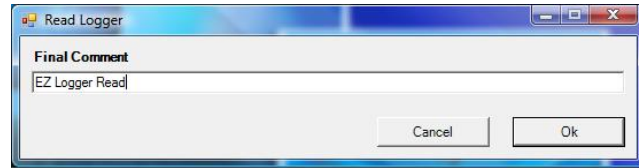
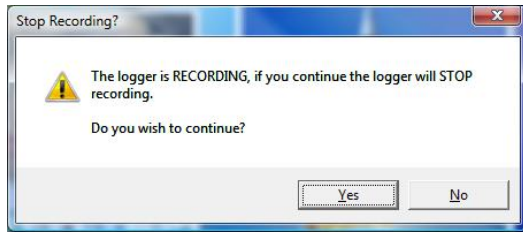
Select **Read Logger** on the drop down menu.



The Stop Recording Warning screen will appear.

Click **Yes** if you are ready to stop recording and continue.

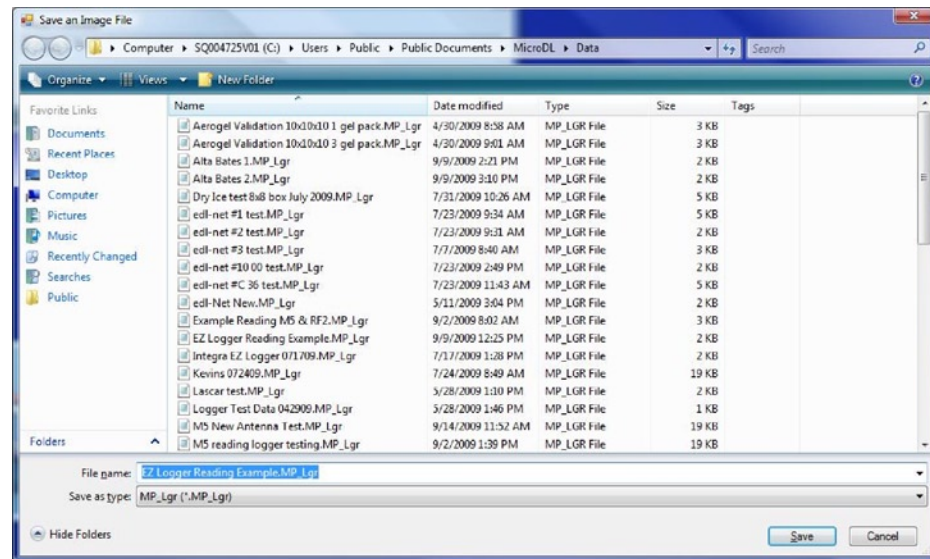
The Final Comment window will appear. Enter a description



of the current recording that will remind you what the contents are at a later date.

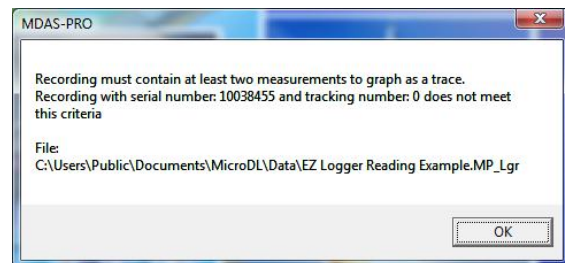
Click **OK**.

Give the new file a unique file name.



The new data file will be saved in the default directory.

Click **Save**.



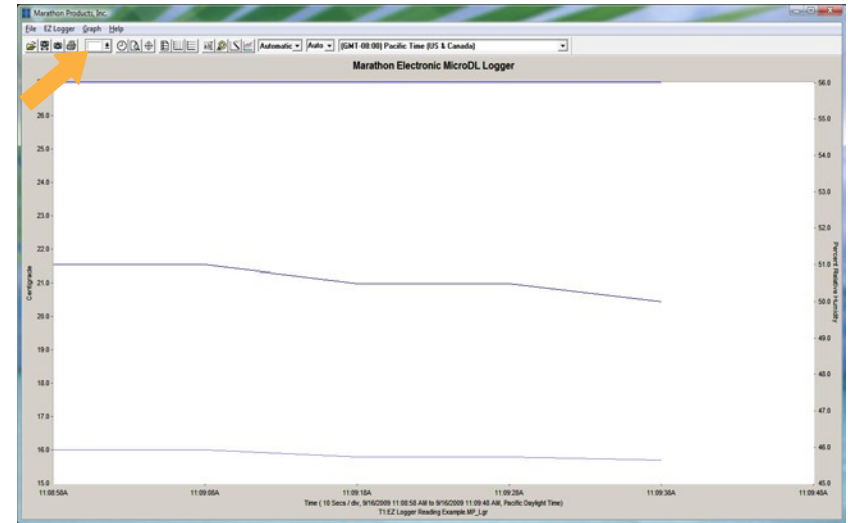
The EZ Logger must contain at least 2 measurements. If you try to read the EZ Logger before it has captured 2 data points you will see this warning. If this window appears click **OK** and wait for more time to pass.

## Graphing Options

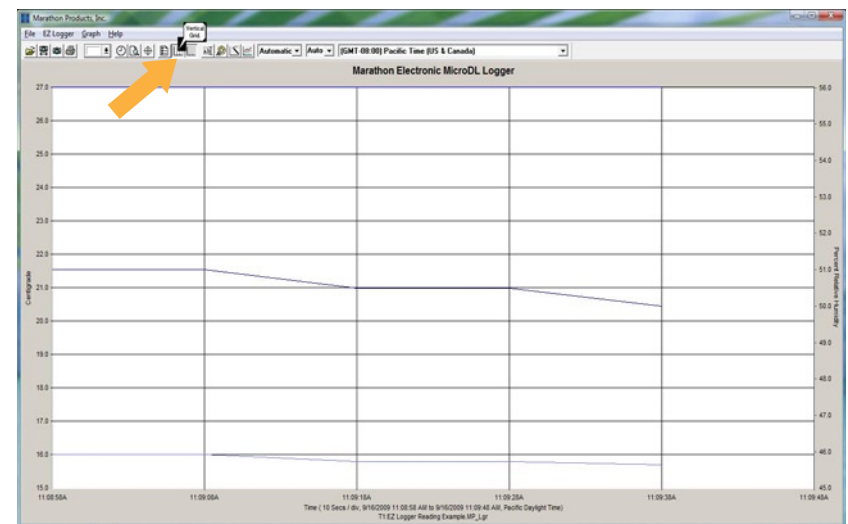
The software will read the EZ Logger's data and display a plot of the temperature, humidity and relative humidity.

You can use the Menu Icons to change the properties of the plot display. Most of the Menu Icons are toggles to turn properties on or off.

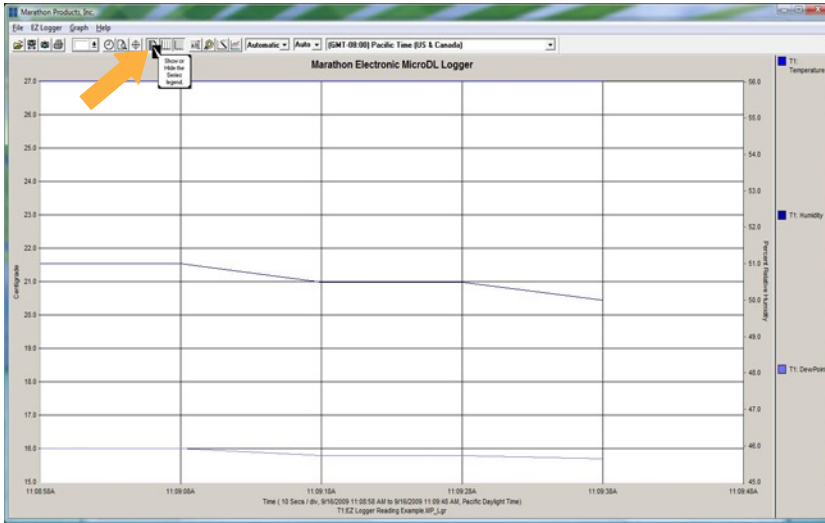
**For example**, click on the colored rectangle to change the color of any of the plot areas. Click the color and select white. Then click and hold the color and drag it into the plot area.



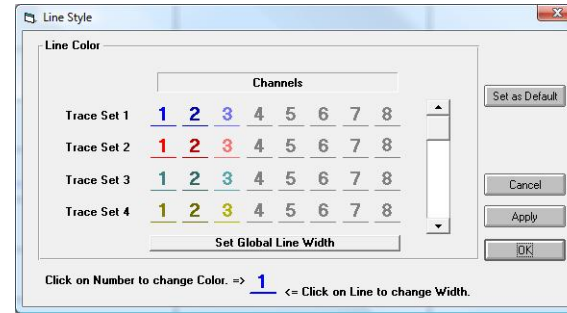
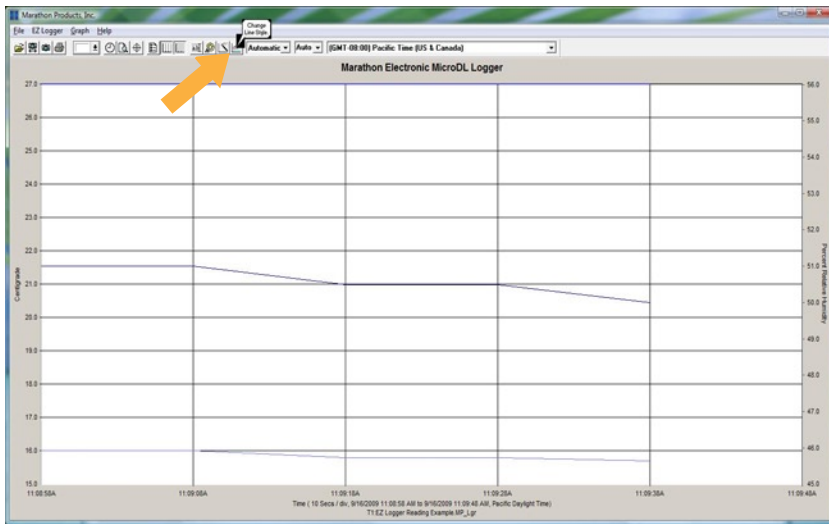
The **two icons** for vertical and horizontal grid lines turn the grid lines on and off.



The **Legend Icon** turns the Legend area on and off. The legend can be dragged to a different area of the plot.



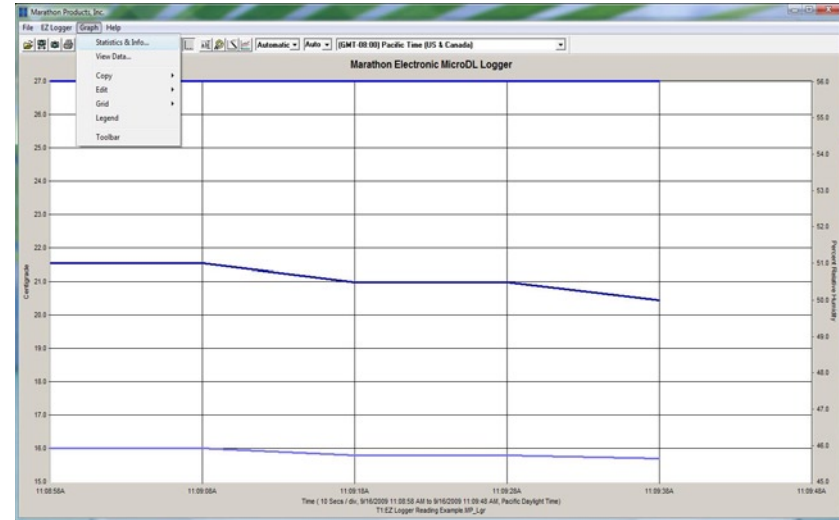
The **Change Line Style Icon** is used to change the color and width of the plot lines.



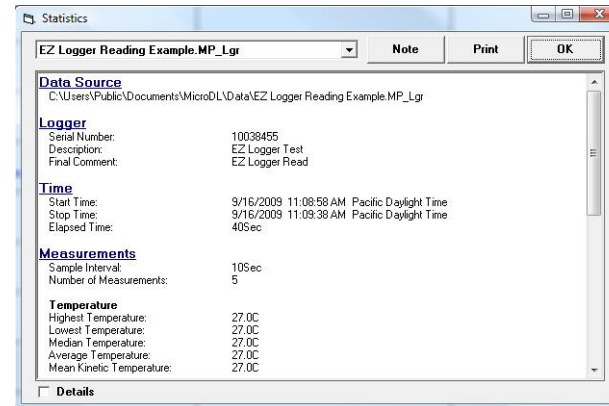
Clicking on the **Change Line Style Icon** opens the Line Style window.

You can try clicking on the other menu icons.

Another useful option is the **Statistics and Information** in the drop down menu under the Graph icon.



This will open a window showing the details of how the EZ logger was programmed and the data collected.



Click on the **Details box** for complete information.