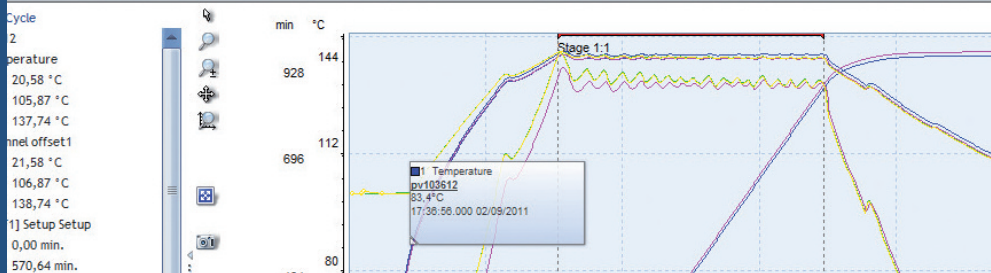


Data management software

QLEVER

17:48:46.000	137,45	138,45	112,74	3 412,0	137,97	137,50	3 364,7	112,74	3 405,3	137,90
17:48:51.000	137,33	138,33	112,74	3 395,3	137,80	137,38	3 352,8	116,33	3 388,9	137,73
17:48:56.000	137,18	138,18	116,18	3 378,5	137,62	137,22	3 337,8	119,80	3 371,8	137,56
17:49:01.000	137,03	138,03	119,50	3 361,0	137,44	137,08	3 324,2	123,16	3 354,7	137,38
17:49:06.000	136,88	137,88	122,71	3 342,7	137,25	136,91	3 308,1	126,40	3 335,3	137,18
17:49:11.000	136,71	137,71	125,79	3 330,3	137,13	136,74	3 292,1	129,52	3 325,5	137,08
17:49:16.000	136,56	137,56	128,78	3 327,7	137,10	136,61	3 279,2	132,53	3 322,3	137,04



Acquisition, analysis, technical data management

QLEVER is an acquisition, analysis and data management software. It enables visualization of measurement, calculations on data, and creation of technical reports.

Customizable, with numerous ergonomics and flexibility features, it is a simple of use and outstandingly efficient software.



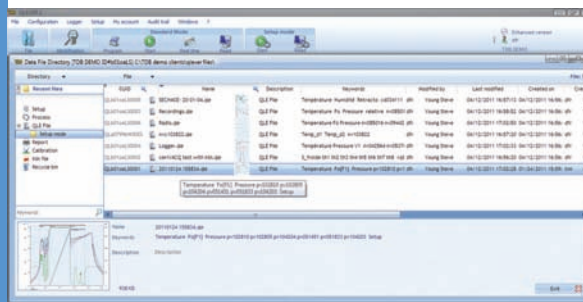
Main functionalities

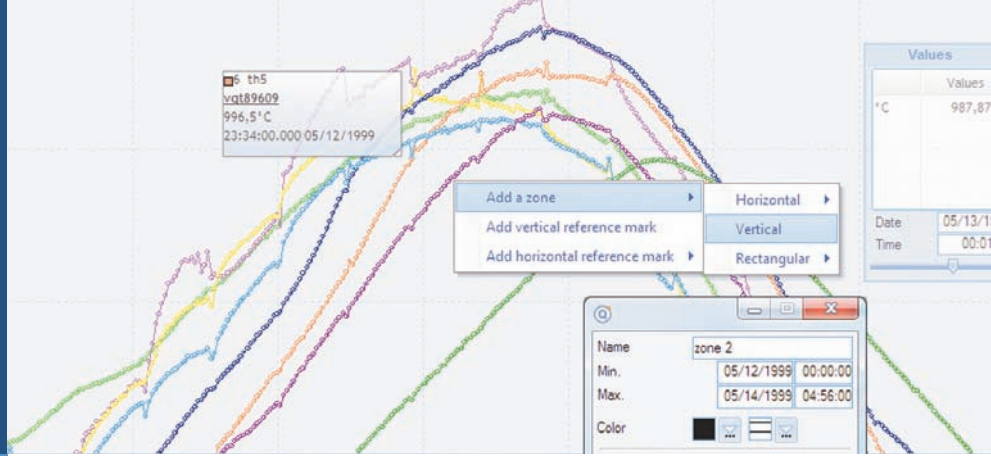
Versions

- QLEVER has been designed for a combined use of several loggers as well as for real time reading. This version is available with the following options :
 - QLEVER 21 CFR Part 11 : security access management with creation of different users' accounts and access levels and audit trail.
 - QLEVER Pharma : detailed configuration of the thermal process in the setup, definition of cycles and steps, editing of a report with detailed calculations by cycle and report approval.
 - QLEVER Ceramics : definition of kiln, addition of items, superposition of thermal profile and kiln map, events management, placement of thermocouples inside kilns and tunnels.
 - QLEVER Calibration.
- Possible adaptations according to customer's specifications:
 - QLEVER for wired real time monitoring.
 - QLEVER Process Management for communication with PLC and closed loop control of your process.
- QLEVER Lite is the simplified, lower budget version. It is mainly intended for the use of a single TMI-Orion sensor. This version does not support : options, multi-logger interfaces, data merge, data analysis.

File management

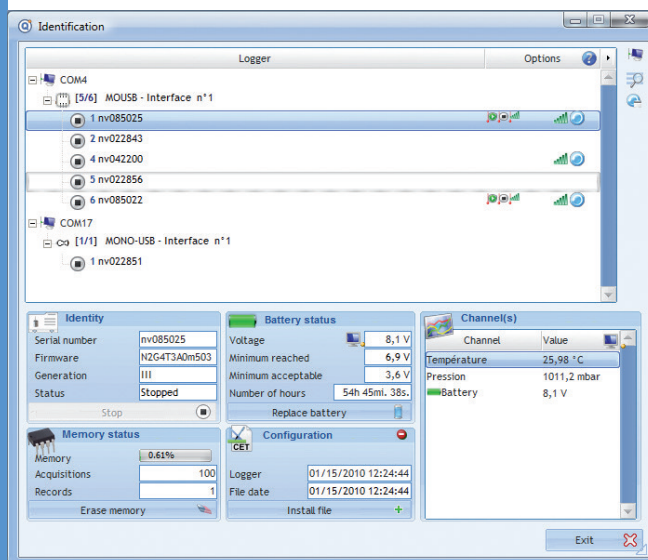
- A simple interface enables ergonomic file management.
- All files are part of a proprietary TMI-Orion Database.
- A search engine is included. Find easily your data by typing a key word.
- Duplicate data files.
- Import and export data files between various TMI-Orion Databases.
- Open compatible vcq files.
- Backup and restore the database.
- Share the database with other users on the same network.





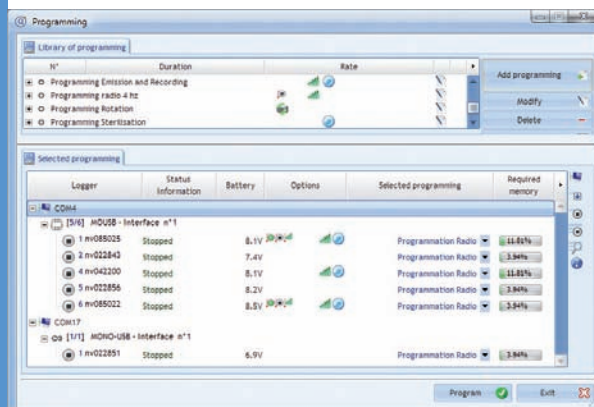
Connection

- Display connected loggers.
- See the status of the loggers: Stopped or Running.
- Calibration files management with information on the adjustment date and validity.
- Possibility of using any kind of TMI-Orion loggers simultaneously,



Programming

- Create setup libraries.
- Select programs easily for the connected loggers.
- For Pharma users, create a program through a detailed Setup protocol (description of the test, description of the system under test, selection of loggers, position of loggers in the system chamber, definition of calculations and events)...



Start

- Start and stop on a temperature threshold
- Possibility to plan the start date and time of the loggers.

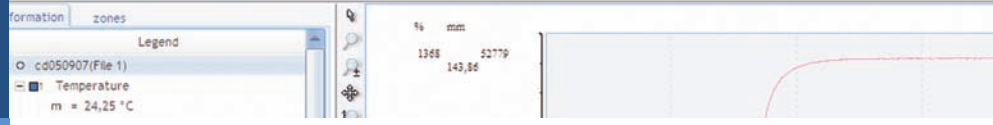
QLEVER

es: 1, initial date :10/09/2008 15:17:19:00

Date	Time	1(°C)	2(%RH)	3(mm)	4(%)
0/09/2008	15:17:14.000	34,13	31,98	139,7	4 371,00
0/09/2008	15:17:19.000	33,59	37,04	139,7	4 371,00
0/09/2008	15:17:24.000	33,73	32,46	139,7	4 371,00
0/09/2008	15:17:29.000	33,83	30,35	139,7	4 372,00
0/09/2008	15:17:34.000	33,90	29,34	139,7	4 371,00
0/09/2008	15:17:39.000	33,91	29,14	139,7	4 371,00
0/09/2008	15:17:44.000	33,90	28,94	139,7	4 371,00
0/09/2008	15:17:49.000	33,90	29,05	139,7	4 372,00
0/09/2008	15:17:54.000	33,91	29,12	139,7	4 371,00
0/09/2008	15:17:59.000	33,89	29,20	139,7	4 372,00
0/09/2008	15:18:04.000	33,87	29,29	139,7	4 372,00
0/09/2008	15:18:09.000	33,61	30,45	139,7	4 372,00

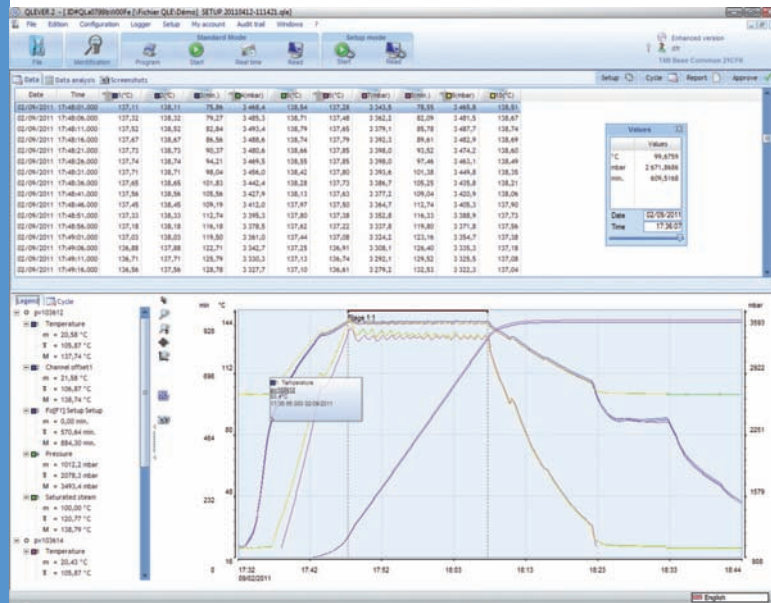
File: 2, initial date :10/08/2008 15:07:14:00

Date	Time	5(pt)	6(pt)	7(pt)	8(pt)
10/09/2008	15:07:14.000	46 491	44 746	4 464	
10/09/2008	15:07:19.000	46 423	44 742	4 465	
10/09/2008	15:07:24.000	46 379	44 734	4 464	
10/09/2008	15:07:29.000	46 395	44 706	4 465	
10/09/2008	15:07:34.000	46 532	44 605	4 461	
10/09/2008	15:07:39.000	46 469	44 634	4 460	
10/09/2008	15:07:44.000	46 367	44 659	4 461	
10/09/2008	15:07:49.000	46 341	44 670	4 460	
10/09/2008	15:07:54.000	46 332	44 674	4 460	
10/09/2008	15:07:59.000	46 333	44 674	4 461	
10/09/2008	15:08:04.000	46 336	44 674	4 461	
10/09/2008	15:08:09.000	46 343	44 669	4 461	



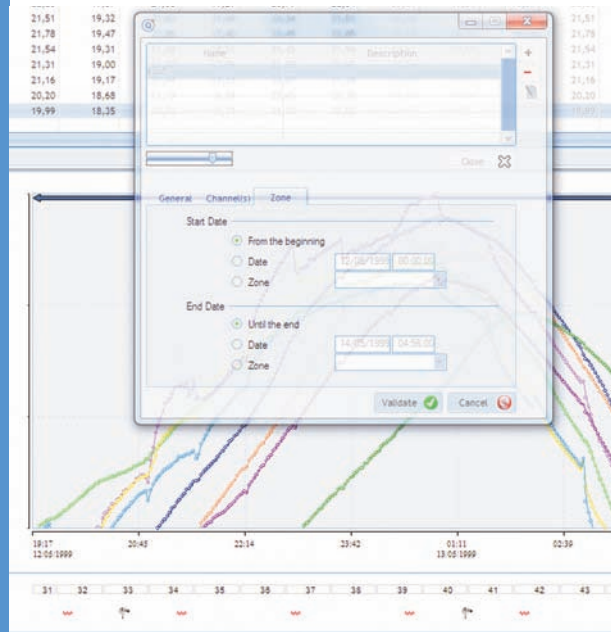
Reading the loggers

- Create one single data file merging all the loggers.
- Or create one data file for each logger.
- Fusion of several recordings from various loggers.

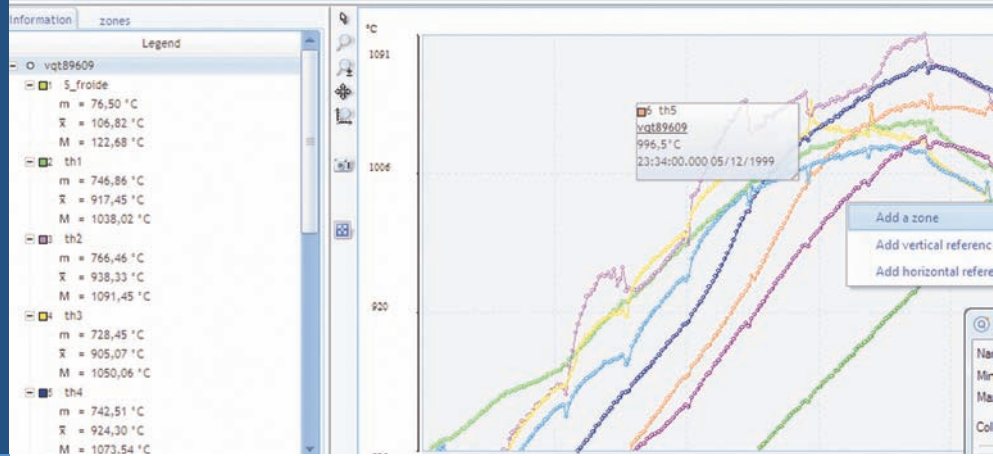


Visualization

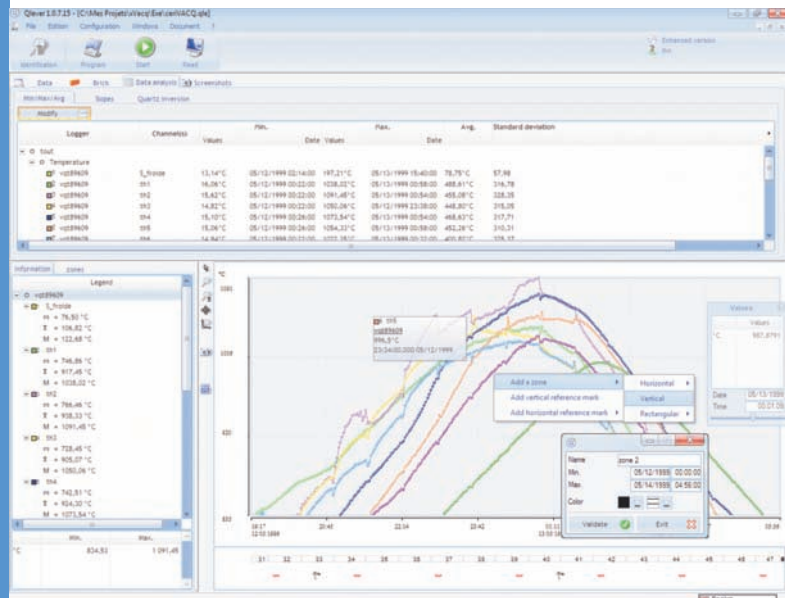
- Creation of study zones on the graph.
- On the same screen: graphical, analytical, statistical results
- Easy creation of statistics on each zone.



QLEVER



- Screen shots.
- Large range of physical units.
- Calculate Pasteurization, Sterilization values, Offset, Delta, percentage, slope, time above, saturated steam conversions. Etc...
- Min, Max, Average calculation within zones.
- In radio mode : real time calculations with automatic backup.
- Easy creation of statistics on each zone.
- Export.
- Measurement report creation with QLEVER Pharma.
- Ceramics kiln and tunnel profile.



Configuration requirements

Category	Necessary configuration
Required operating system	Windows XP 32 bits (SP3) Windows VISTA 32 bits Windows SEVEN 32 bits, 64 bits...
Required hardware configuration	1 GB of RAM (512 MB minimum) CD-ROM player 30 MB available for QLEVER installation RS232 serial port for former RS232 TMI-Orion interfaces USB port for new USB interfaces A NTFS partition for QLEVER data management

Languages

- QLEVER is available in English, French, Spanish, German, Japanese, Chinese, and Korean, soon in Italian and Czech.



TMI-ORION - Parc de Bellegarde - Bât. C - 1, chemin de Borie - 34170 Castelnau-le-Lez - FRANCE
Tel +33 (0)4 99 52 67 10 - Fax +33 (0)4 99 52 67 19 - www.tmi-orion.com

TMI-USA - 11491 Sunset Hills Rd., Suite 310 - Reston, VA 20190 - USA
Tel +1 703 668 0114 - Fax +1 703 668 0118 - www.tmi-orion.com